






	Legend
1 x	B-C-002
2 x	Barricade
2 x	C-018-1A
2 x	C-053
1 x	C-117-L
1 x	C-117-R
2 x	C-132
2 x	C-154-L
1 x	C-184
	Closure Area
27 x	Delineator
12 x	Tripod Stand
	Work Area

<div><div>UNIVERSAL GROUP</div></div>		Governing Authority <div></div>	Contractor <div></div>	<div>Notes:</div> <div><div>- Plan was prepared in accordance with MoTI TMM 2020.</div><div>- Client has been notified of the WorkSafeBC OHS Regulations Part 18 amendment & it is their responsibility to ensure site compliance.</div><div>- Plan must be reviewed if there are any changes to the findings of risk assessment (provided), or after one year.</div><div>- Implementation of set up to follow the process outlined in the SJP-019 Device Installation Safe Job Procedure.</div><div>- Advanced Warning Sign distances may be shortened to suit urban block length.</div><div>- 3.5m lane width to be maintained.</div><div>- Driveway access to be maintained.</div><div>- After working hours, road configuration to be re-instated.</div></div>	<div>Plan Orientation</div> <div><div>N</div></div> <div>Posted Speed</div> <div><div>MAXIMUM</div><div>50</div><div>km/h</div></div>
9770 199a St, Langley	604-444-3732	Site Contact	Aras Azarbay		
Designed By	Hunter Delalla		778-231-8125		
SRN	5841	PO/WO/Network	2943613		
Date	2025-08-28	Project Date/Time	TBD		
<div>Plan Scale</div> <div></div> <div>1 : 1208 (1cm = 12m)</div>		Figure	8.14		
		Drawing No.	004		
		Revision No.	00		
Sheet		1 of 1		Job Location: Thomas Rd and Promontory Rd Job Description: Telus Utility Work - Manhole Access for Underground Placing/Splicing/Removals Closure Description: NB Partial Lane Closure - Lane Shift	



<div><div><div></div><div>UNIVERSAL GROUP</div></div></div>		<div><div><div></div><div>CITY OF CHILLIWACK</div></div></div>	<div><div><div></div><div>MOTT TELECOM</div></div></div>	<div>Notes:</div> <div><div>- Plan was prepared in accordance with MoTI TMM 2020.</div><div>- Client has been notified of the WorkSafeBC OHS Regulations Part 18 amendment & it is their responsibility to ensure site compliance.</div><div>- Plan must be reviewed if there are any changes to the findings of risk assessment (provided), or after one year.</div><div>- Implementation of set up to follow the process outlined in the SJP-019 Device Installation Safe Job Procedure.</div><div>- Advanced Warning Sign distances may be shortened to suit urban block length.</div><div>- 3.5m lane width to be maintained.</div><div>- Driveway access to be maintained.</div><div>- After working hours, road configuration to be re-instated.</div><div>- Closure to move South and be implemented as needed at MH-712.</div></div>	<div>Plan Orientation</div> <div><div>N</div><div></div></div> <div>Posted Speed</div> <div><div>MAXIMUM</div><div>50</div><div>km/h</div></div>
9770 199a St, Langley	604-444-3732	Site Contact	Aras Azarbay		
Designed By	Hunter Delalla		778-231-8125		
SRN	5841	PO/WO/Network	2943613		
Date	2025-08-28	Project Date/Time	TBD		
<div>Plan Scale</div> <div><div></div><div>1 : 1208 (1cm = 12m)</div></div>		Figure	8.14, 11.15		
		Drawing No.	003		
		Revision No.	00		
Sheet		1 of 1		Job Location: Thomas Rd and Promontory Rd Job Description: Telus Utility Work - Manhole Access for Underground Placing/Splicing/Removals Closure Description: NB Right Turn Lane Closure - Lane Shift	

UNIVERSAL GROUP

9770 199a St, Langley

604-444-3732

Design By

Hunter Delalla

SRN

5841

Date

2025-08-28

Governing Authority

Contractor

CITY OF CHILLIWACK

MOTT TELECOM

Site Contact

Aras Azarbay

PO/WO/Network

2943613

Project Date/Time

TBD

Figure Number

11.15 / 8.6

Drawing No.

002

Revision No.

00

Job location: Promontory Rd & Thomas Rd

Closure description: Sidewalk & EB Curb Lane Closure

Job description: TELUS Utility Work - Pole Access for Aerial Placing/Splicing/Removals

Notes:

- Plan was prepared in accordance with MoTI TMM 2020.

- Client has been notified of the WorkSafeBC OHS Regulations Part 18 amendment & it is their responsibility to ensure site compliance.

- Plan must be reviewed if there are any changes to the findings of risk assessment (provided), or after one year.

- Implementation of set up to follow the process outlined in the SJP-019 Device Installation Safe Job Procedure.

- Advanced Warning Sign distances may be shortened to suit urban block length.

- 3.5m lane width to be maintained.

- Driveway access to be maintained where feasible.

- After working hours, road configuration to be re-instated.

- BC Transit to be notified of Bus Stop relocation/closure.

Plan Orientation

N

Posted Speed

MAXIMUM

50

km/h

Plan Scale

1 : 1176 (1cm = 12m)

Sheet

1 of 1

Promontory Rd - 50 km/h

Thomas Rd

40 m

35 m Merge

100 m Work Area

5 m

35 m Work Area

30 m Downstream

40 m

Sign to be placed at Promontory Rd and Chilliwack River Rd

Legend	
1 x	Arrowboard (Single)
1 x	B-C-002
6 x	Barricade
3 x	C-018-1A
1 x	C-130-R
1 x	C-184
4 x	C-202
2 x	C-203-L
2 x	C-203-R
	Closure Area
32 x	Delineator
4 x	High Level Wind Device
10 x	Tripod Stand
	Work Area

© Copyright Universal Group 2025

<https://www.theuniversalgroup.ca/>

UNIVERSAL GROUP

9770 199a St, Langley

604-444-3732

Design By

Marley Futerko

SRN

4504

Date

2025-08-28

Governing Authority

Contractor

CITY OF CHILLIWACK

MOTT TELECOM

Site Contact

Aras Azarbay

778-231-8125

PO/WO/Network

2943613

Project Date/Time

TBD

Figure Number

11.15 / 8.6

Drawing No.

001

Revision No.

001 HD

Job location: Promontory Rd & Thomas Rd

Closure description: Sidewalk & WB Curb Lane Closure

Job description: TELUS Utility Work - Manhole Access for Underground Placing/Splicing.Removing

Notes:

- Plan was prepared in accordance with MoTI TMM 2020.

- Client has been notified of the WorkSafeBC OHS Regulations Part 18 amendment & it is their responsibility to ensure site compliance.

- Plan must be reviewed if there are any changes to the findings of risk assessment (provided), or after one year.

- Implementation of set up to follow the process outlined in the SJP-019 Device Installation Safe Job Procedure.

- Advanced Warning Sign distances may be shortened to suit urban block length.

- 3.5m lane width to be maintained.

- Driveway access to be maintained where feasible.

- After working hours, road configuration to be re-instated.

- Closure to flip to the other side and be implemented as needed at P1.

Plan Orientation

N

Posted Speed

MAXIMUM

50

km/h

Plan Scale

1 : 1176 (1cm = 12m)

Sheet

1 of 1

Promontory Rd - 50 km/h

30m Downstream

20m Work Area

30m Buffer

35m Merge Taper

40 m

40 m

50 m

Thomas Rd

1 x

Arrowboard (Single)

1 x

B-C-002

3 x

Barricade

2 x

C-018-1A

1 x

C-053

1 x

C-130-R

1 x

C-184

2 x

C-202

1 x

C-203-L

1 x

C-203-R

15 x

Delineator

4 x

High Level Wind Device

6 x

Tripod Stand

Work Area

© Copyright Universal Group 2025

<https://www.theuniversalgroup.ca/>

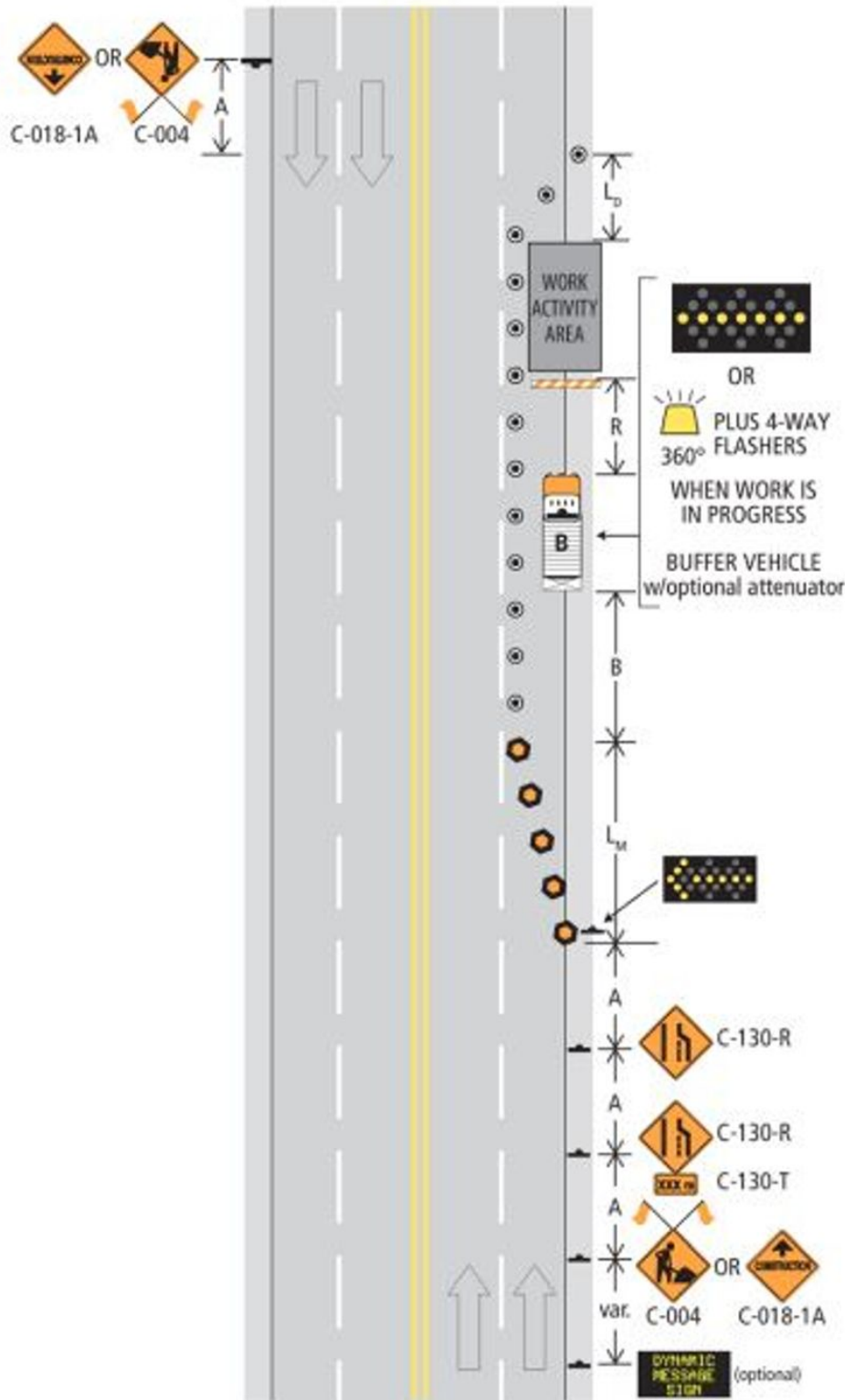
www.invarion.com

Section 8: Traffic Control Layouts – Multilane Undivided Roadways



Ministry of
Transportation
and Infrastructure

Figure 8.6: Right Lane Closed – Short and Long Duration



Section 8: Traffic Control Layouts – Multilane Undivided Roadways

Figure 8.14: Passing/Climbing Lanes – Lane Shift – Short and Long Duration

